

MC-8

MOBILE CRUSHERS

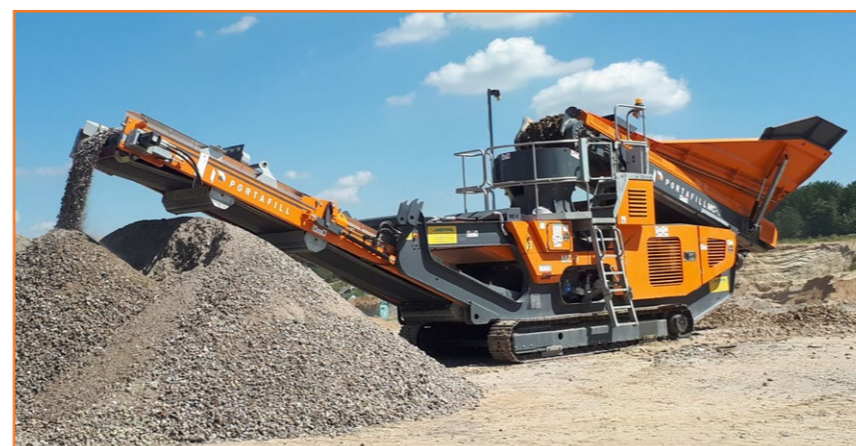
- 1 Engine**
Volvo Penta or CAT
Stage IV, Stage V,
Tier 4F
- 3 Feeder / Hopper**
1000mm (40") Wide
Variable Speed
Hopper Volum 4.5 cubic metres
(6 cu yards)
- 5 Main Conveyor**
900mm (36") Wide
Discharge Height 2759mm (9")

- 2 Feeder / Hopper**
Feed Length 3500mm (11'5")
Feed Width 3500mm (11'5")
Feed Height 2630mm (8'7")
- 4 Cone Crusher**
Fully Hydraulic Cone
Crusher Overload Protection



FEATURES

- Hydraulic folding hopper sides for loading
- Metal detector for detecting metal in feed material, protecting the cone
- Magic eye sensor to control feed material into cone
- Hydraulic relief for uncrushable materials onto main conveyor
- Excellent access to the engine area and other components for maintenance and service.



TRANSPORT

Width	2.5m (8'4")
Length	10.6m (35')
Height	3m (9'9")

Weight	23,800kgs*
APPROX.	52,470lbs*

WORKING

Width	3.4m (11'1")
Length	12.6m (41'4")
Height	3.6m (11'9")