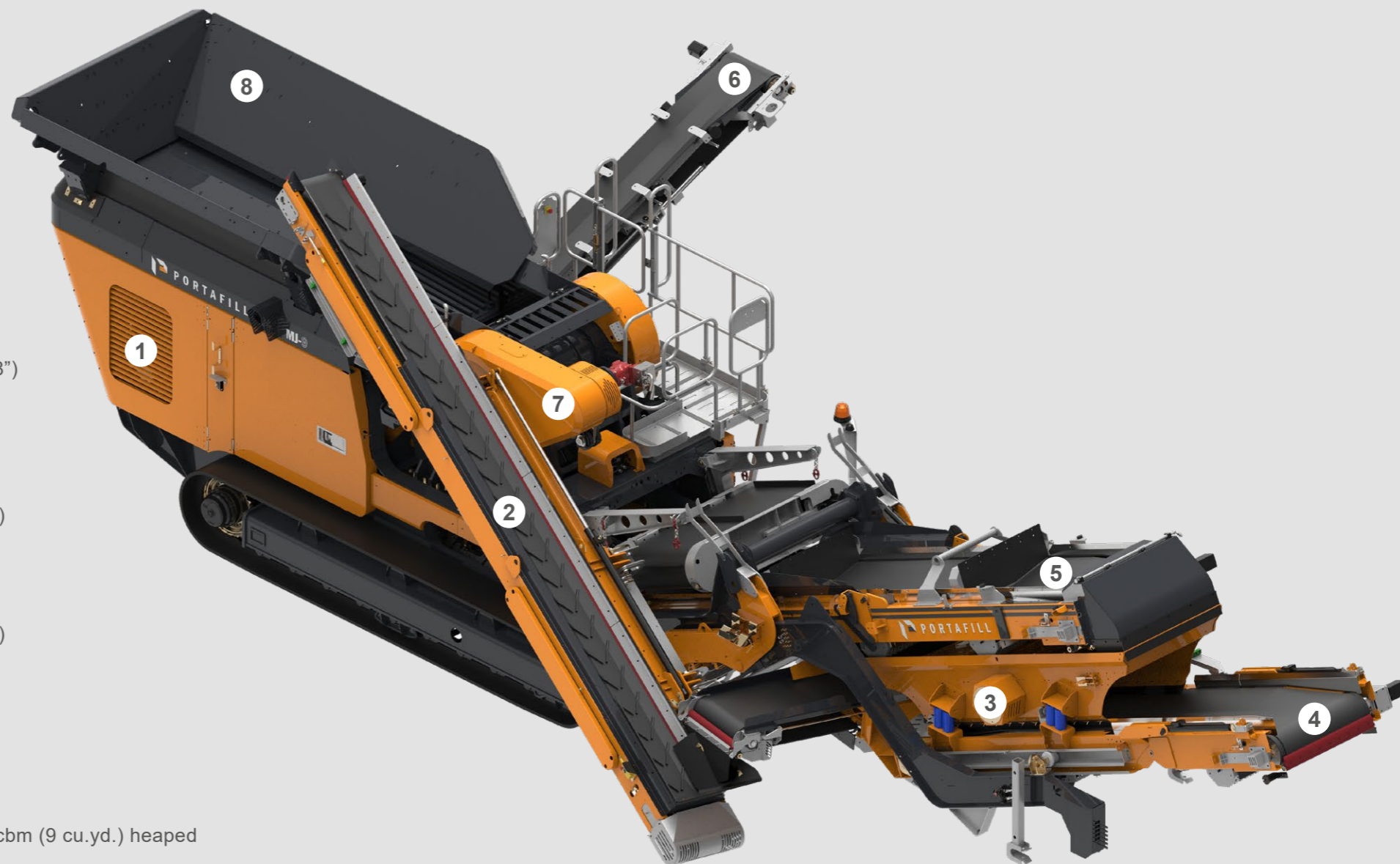


MJ-9R

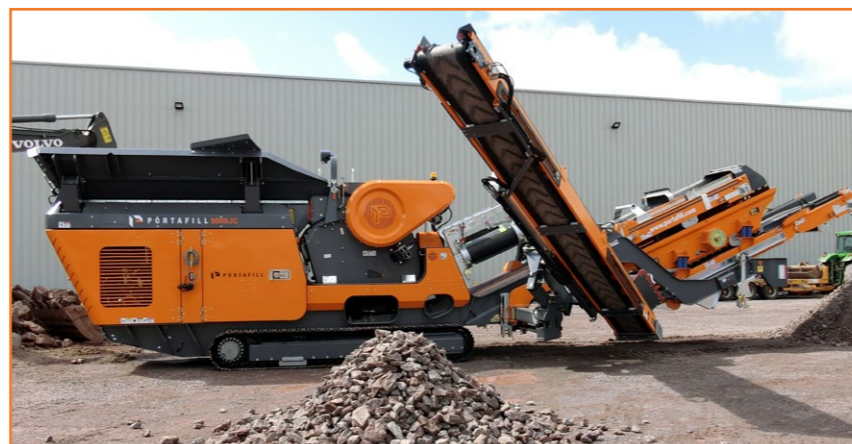
MOBILE CRUSHERS

- 1 Engine**
Volvo, CAT or JCB
Tier 3, Stage V
or Tier 4F
- 2 Returns Conveyor**
500mm (20") Wide
Discharge Height 3575mm (11'8")
Hydraulic Swing as Standard
- 3 Overall Screen Box**
2 Bearing, Single Deck
3340mm x 1000mm (10'11" x 3'3")
- 4 Fines Conveyors**
900mm (36") Wide
Discharge Height 2830mm (9'3")
- 5 Main Conveyor**
900mm (36") Wide
Discharge Height
3015mm (9'10")
- 6 Dirt Conveyor**
500mm (20") Wide
Discharge Height 2830mm (9'3")
- 7 Jaw Crusher**
850mm x 500mm (34" x 20")
Single Toggle
- 8 Vibrating Feeder**
Feed Length 4100mm (13'5")
Feed Width 2000mm (6'6")
Feed Height 3300mm (10'9")
Capacity 4cbm (5.2 cu.yd.) or 7cbm (9 cu.yd.) heaped



FEATURES

- Pan feeder with load sensing
- High capacity jaw crusher
- Excellent access to power pack
- Magnet raises hydraulically for clearance
- Full maintenance platform around crusher
- Quickly detach closed loop system and transport independently



TRANSPORT

Width	2.5m (8'4")
Length	12.5m (41')
Height	3m (9'9")

Weight	35,500kgs*
APPROX.	78,264lbs*

WORKING

Width	13.9m (45'9")
Length	12.9m (42'6")
Height	3.3m (10'11")

*With no options